

Central Drug Research Institute

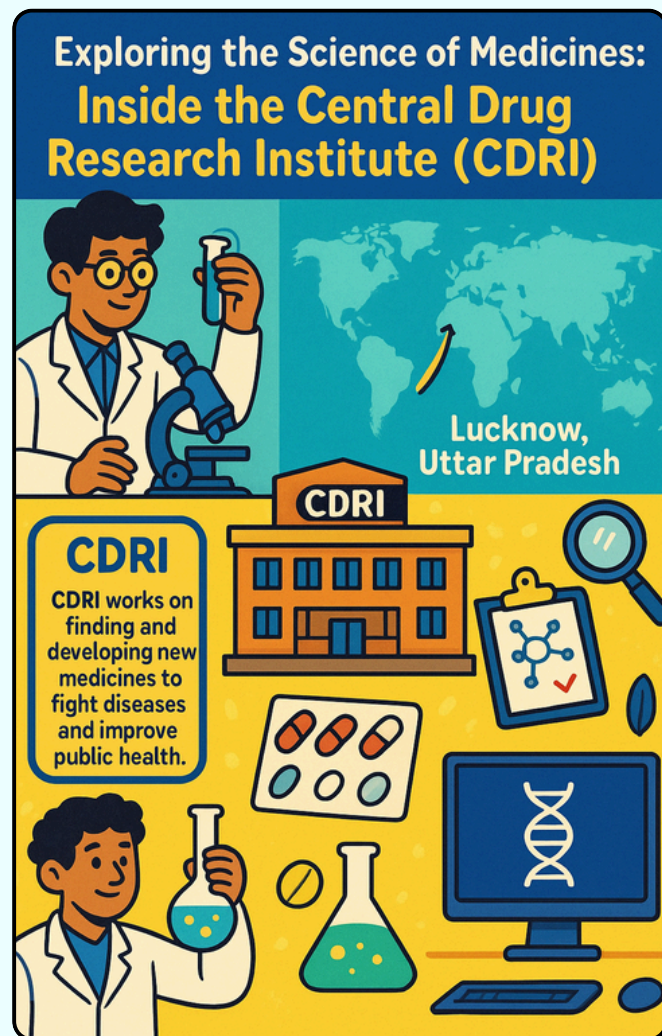
Have you ever wondered how new medicines are discovered and tested before they reach hospitals and pharmacies? The Central Drug Research Institute (CDRI), located in Lucknow, Uttar Pradesh, is one of India's most important scientific institutions dedicated to this mission. Established in 1951 under the Council of Scientific and Industrial Research (CSIR), CDRI works to discover, develop, and deliver new and affordable medicines that improve human health.

CDRI's scientists focus on solving major health challenges by researching diseases like **cancer, diabetes, infections, neurological and reproductive disorders, and even viruses**. They also explore India's vast biodiversity to find natural compounds that might become the next generation of life-saving drugs. The institute studies these discoveries through every stage of drug development – from identifying potential molecules to conducting preclinical studies and clinical trials.

Over the years, CDRI has made many landmark contributions. It developed **Arteether**, an antimalarial drug; **Centchroman**, a non-steroidal oral contraceptive; and **Rifampicin**, a life-saving drug for tuberculosis. Its researchers also played a major role during the **COVID-19 pandemic**. These innovations have helped make healthcare more affordable and reduced India's dependence on imported medicines.

CDRI's advanced laboratories use cutting-edge tools like bioinformatics, molecular biology, and AI-based drug design.

The institute also partners with pharmaceutical companies and global research organizations to ensure that its discoveries reach the market as affordable medicines.



Beyond research, CDRI trains future scientists through **PhD programs, internships, and workshops**, inspiring young minds to enter the world of biomedical research.

With over 10,000 research papers, thousands of trained scientists, and several globally recognized drugs, CDRI stands as a shining example of how Indian science continues to heal the world—one discovery at a time!